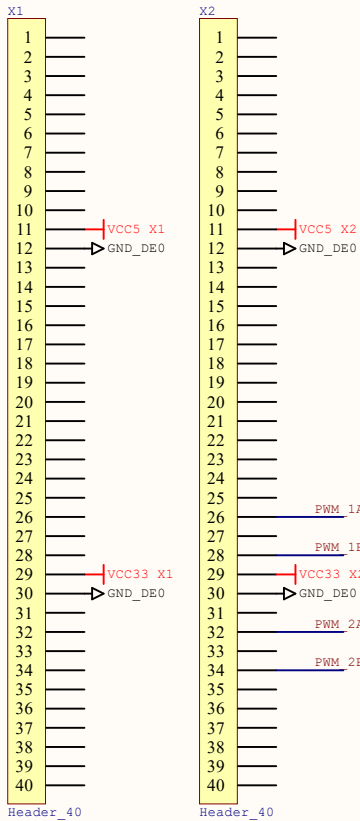
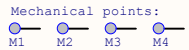
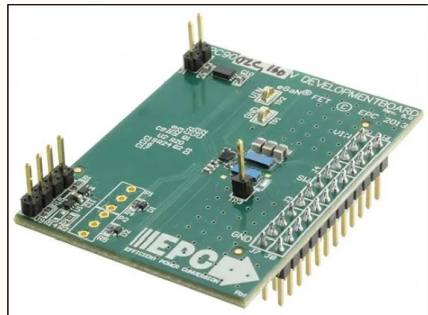




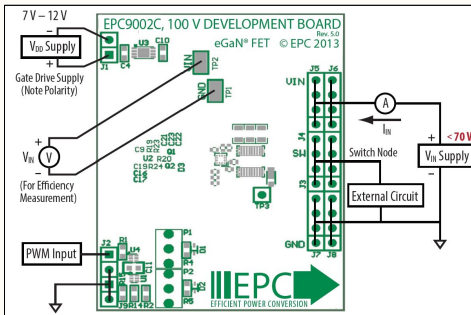
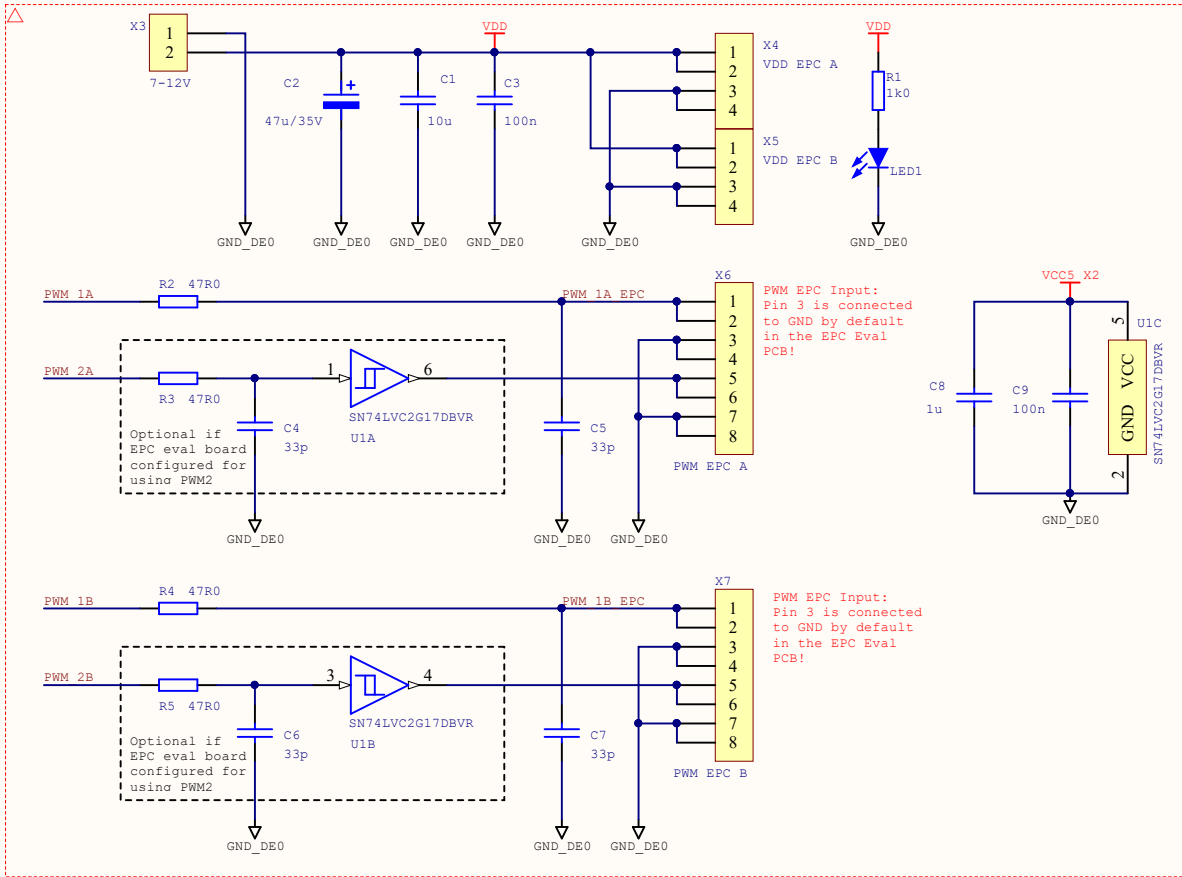
Logo SMA



EPC9002C 100V Evaluation Board

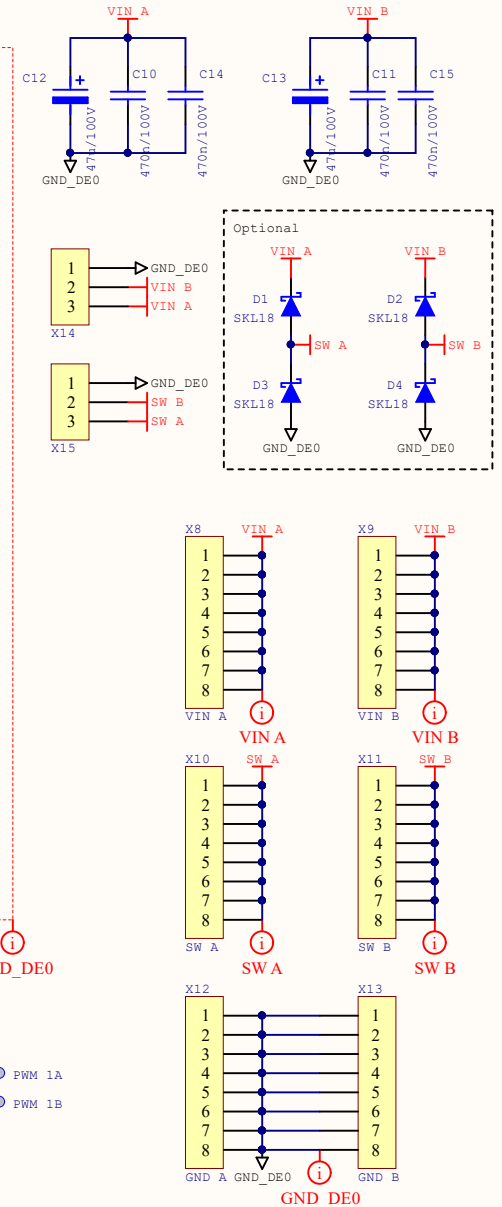
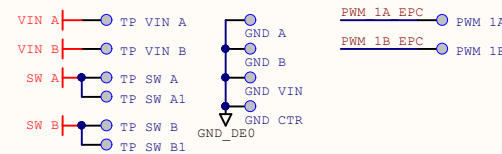


Remarks:  
SMD capacitors (MLCC mainly) without voltage class assigned treat as min. 25V



Schematic 1  
EPC Eval SCH

Test points:



EPC9002C GaN Eval. Board Connection to DE0

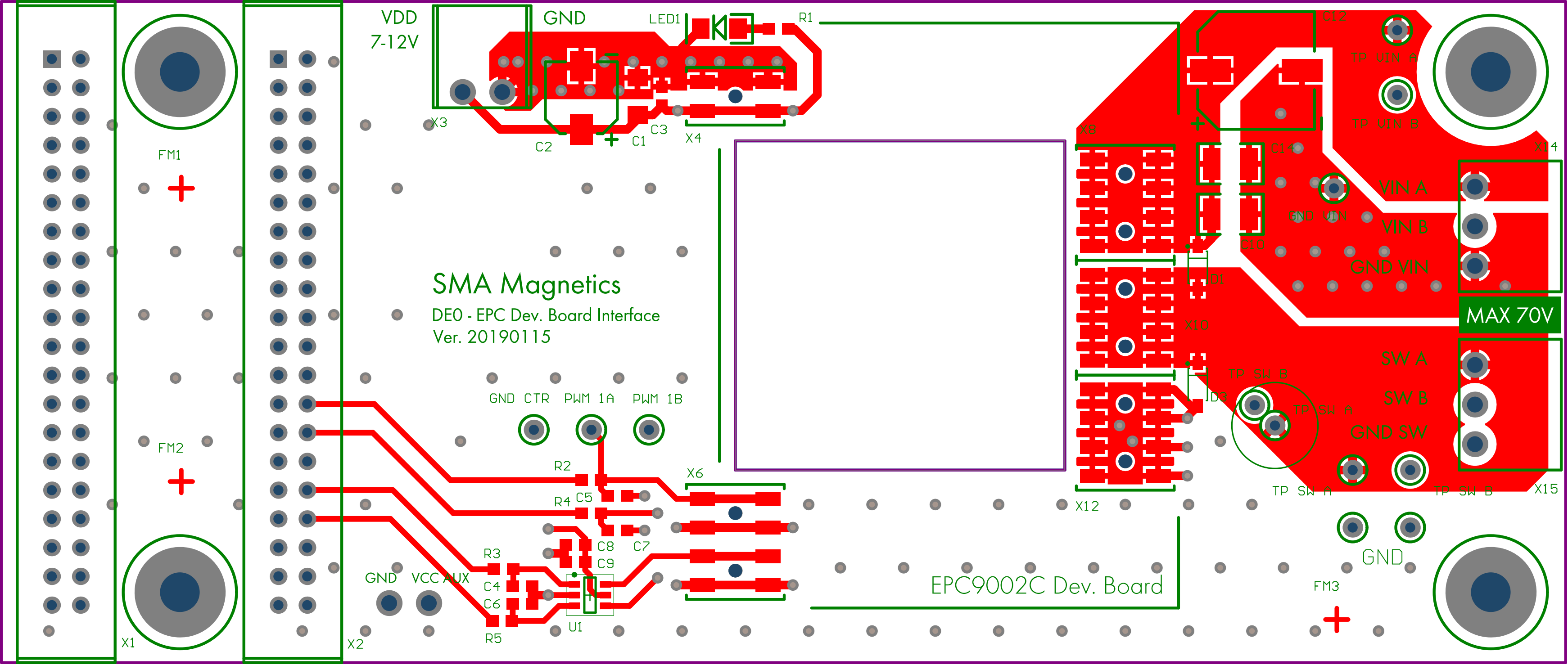
Size: A4	Number: 1	Revision: *
Date: 23.01.2019	Time: 14:50:02	
File: L:\LocalFiles\DTW\rsd\PROJEKTY\dtwP0041_PowerElectronics\034_PSMa\03_PCB\EPC Eval Board DE0 PCB\EPC Eval		

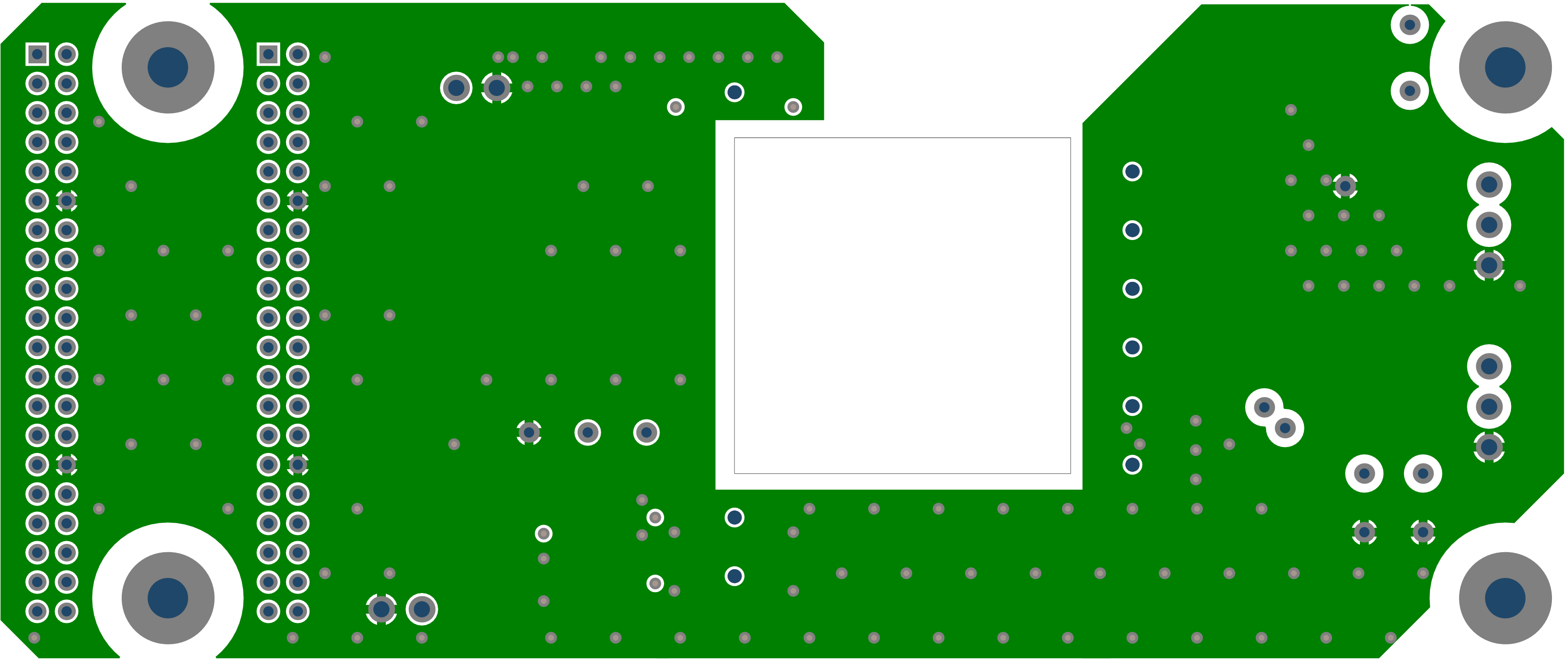
SMA-MAGNETICS

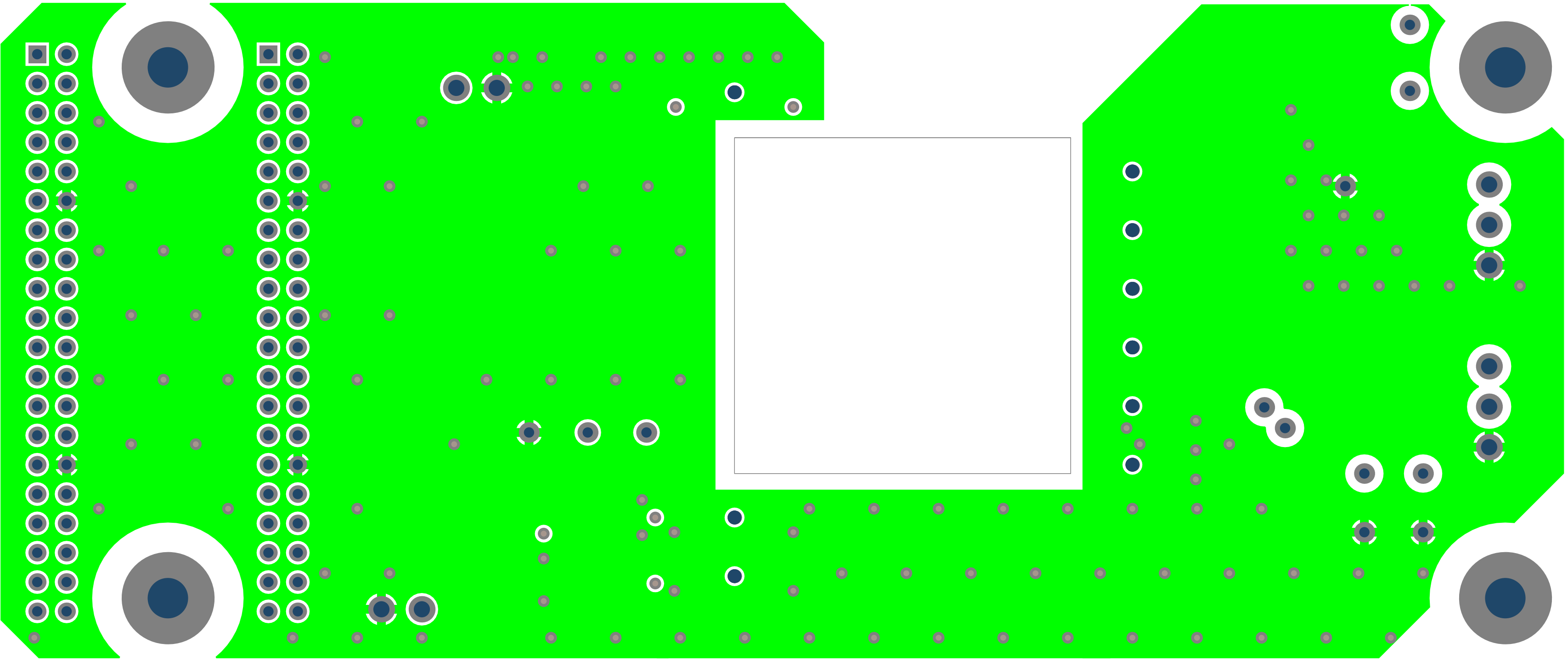
Krakowska 390  
Zabierzów, 32-080  
Poland

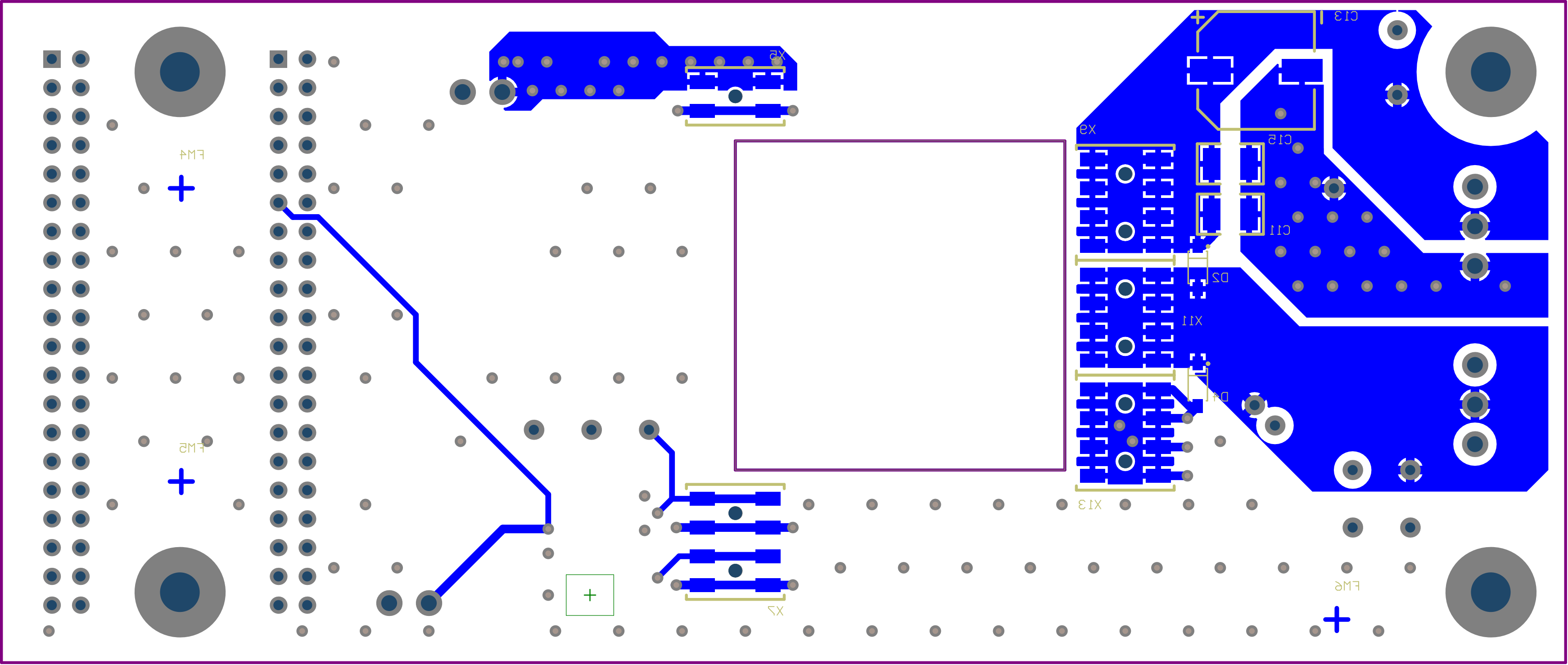




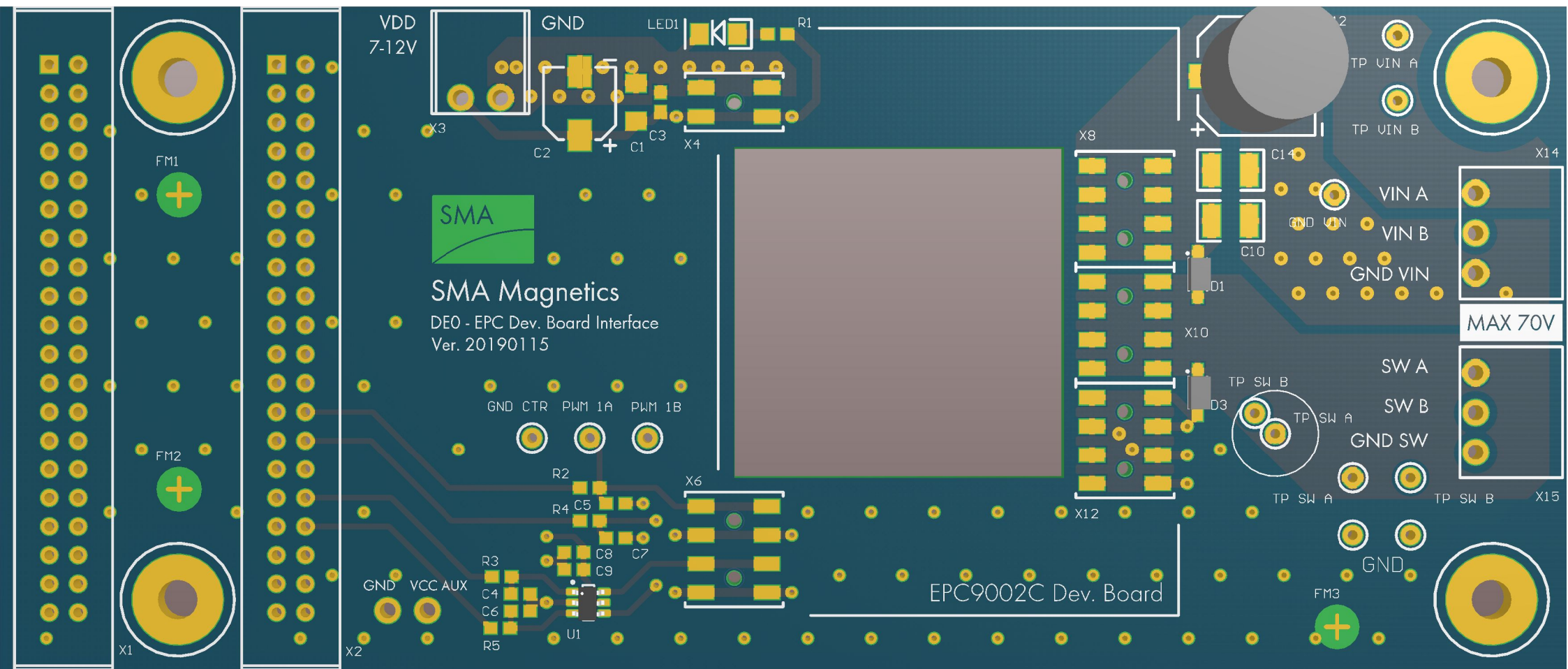


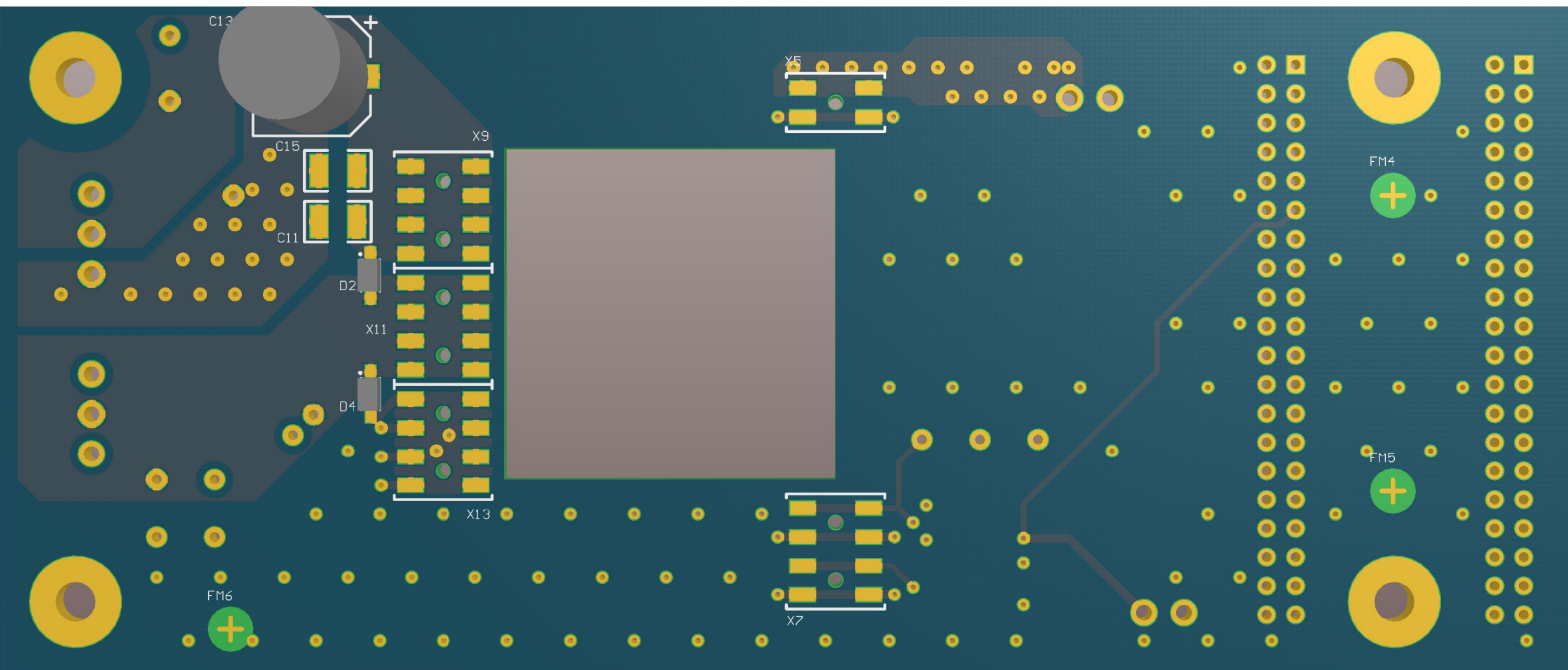




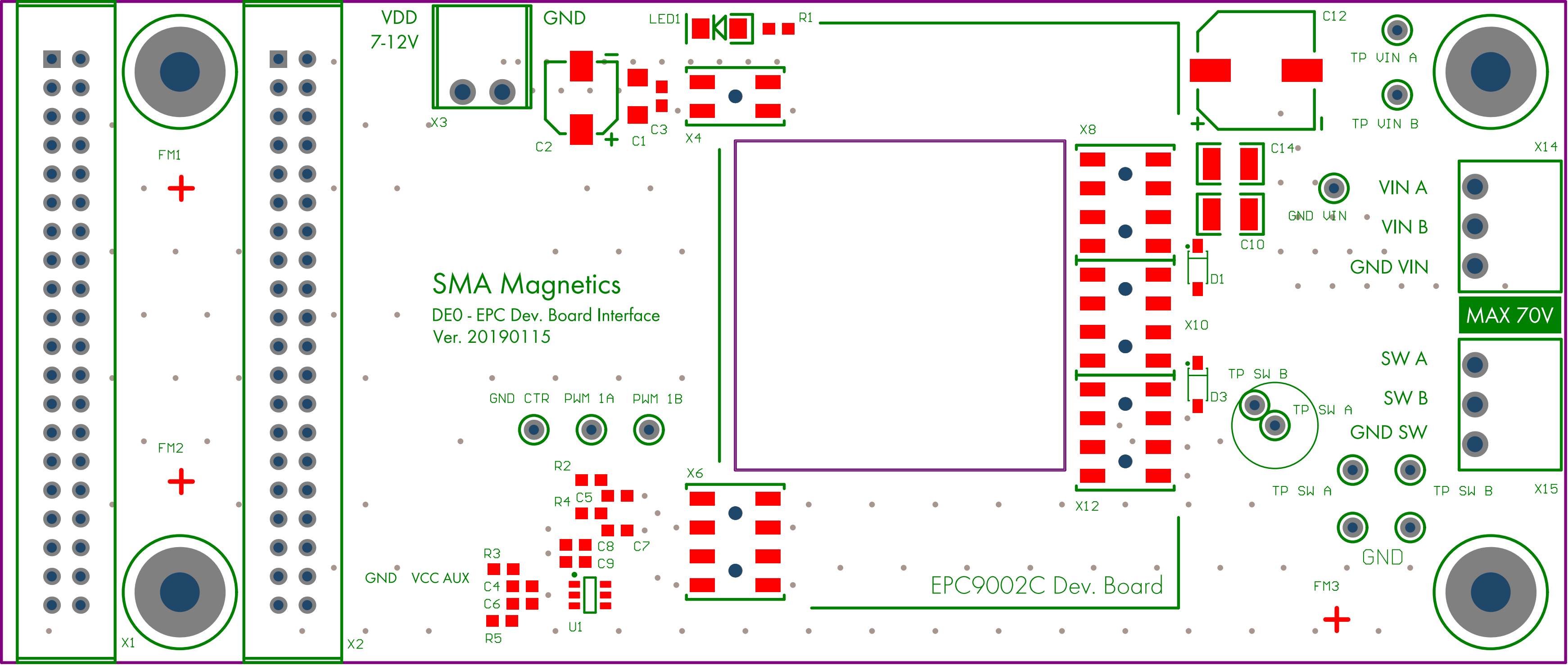


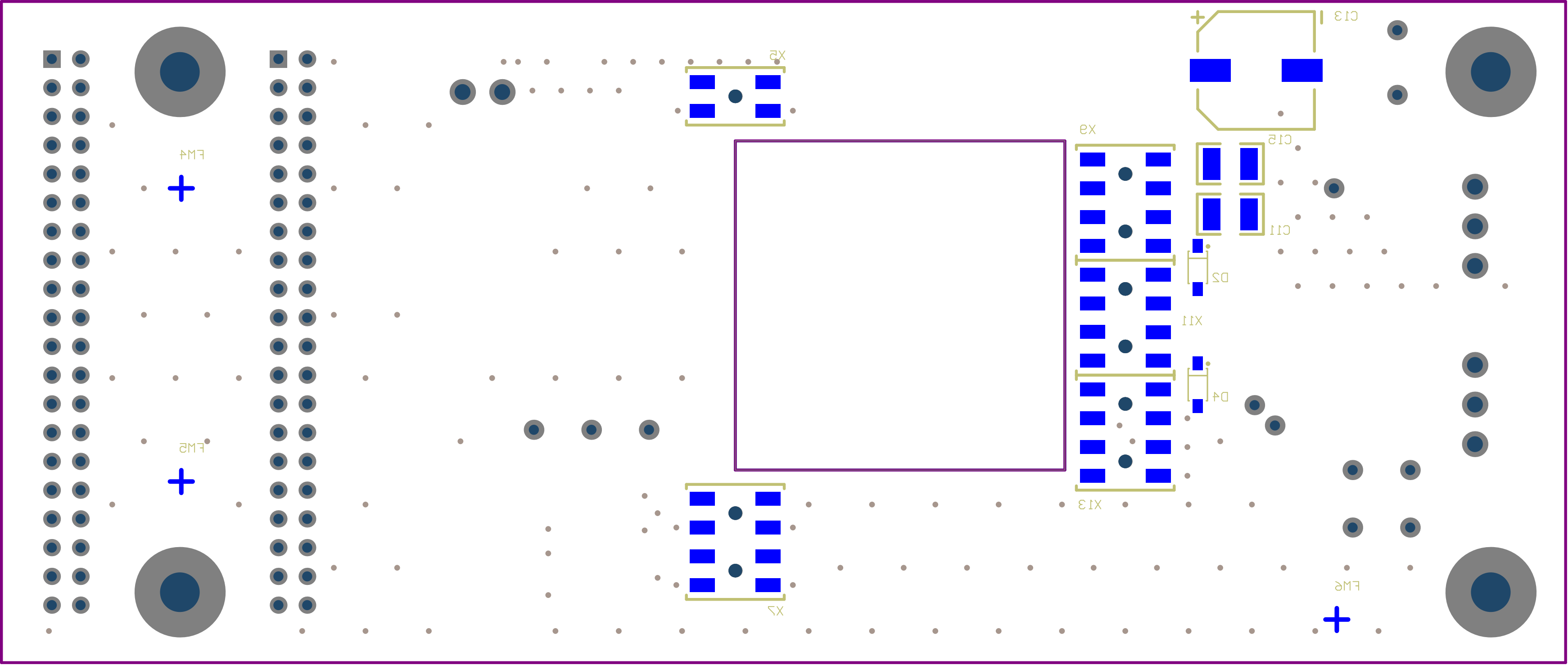


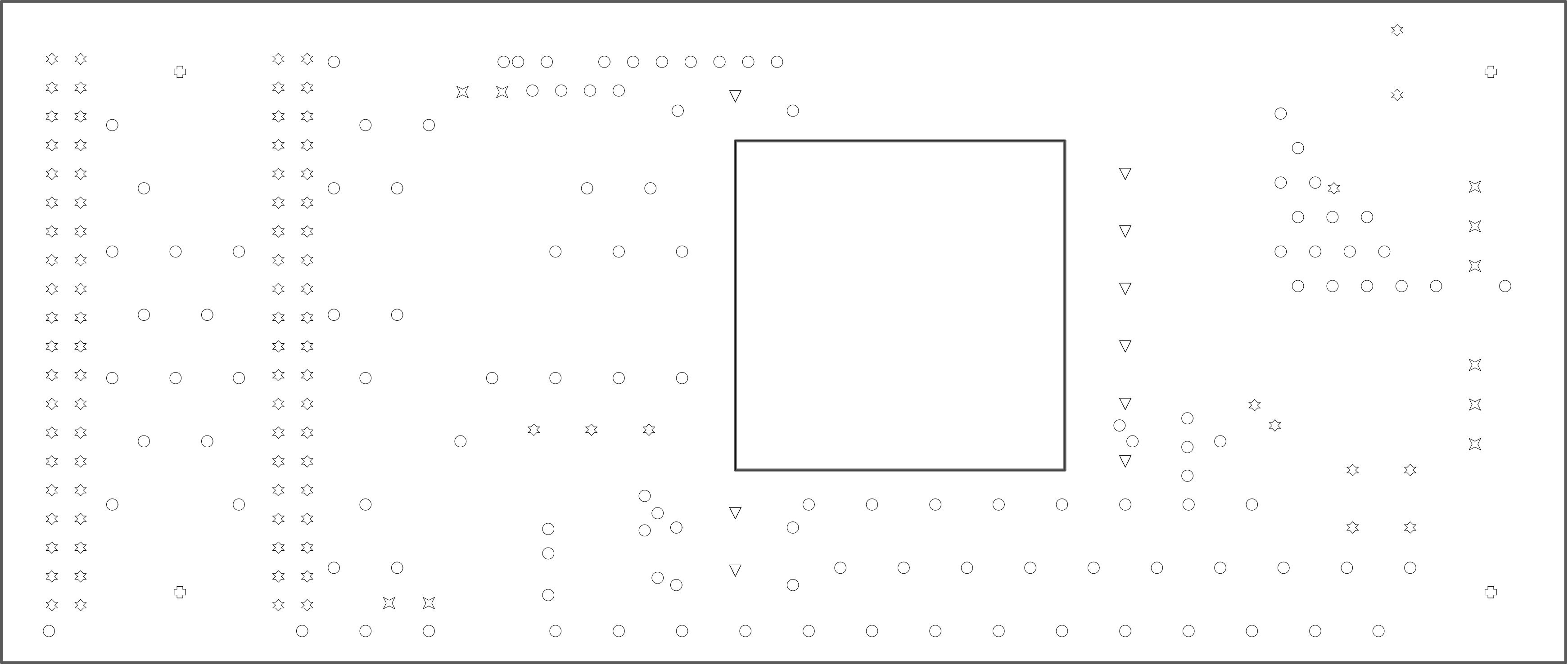


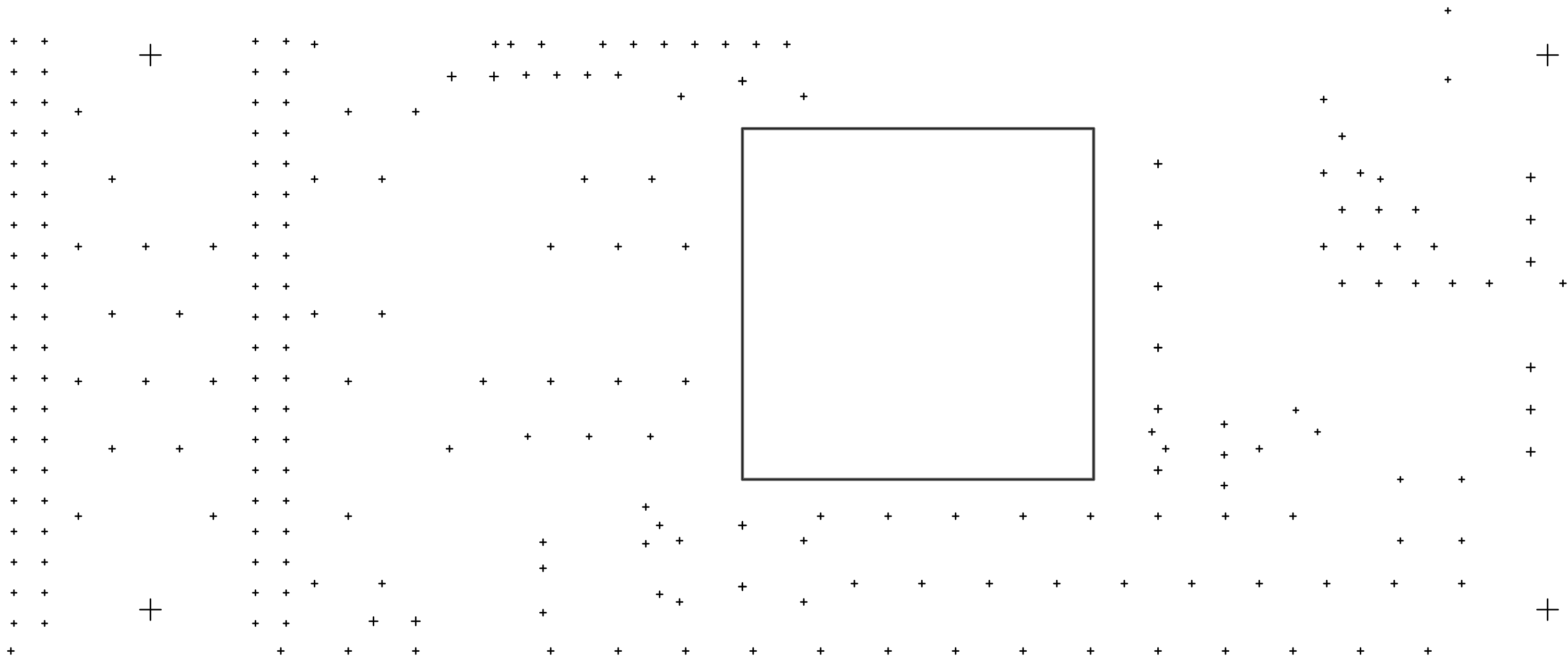























# Board Stack Report

Stack Up		Layer Stack			
Layer	Board Layer Stack	Name	Material	Thickness	Constant
1		Top Paste			
2		Top Overlay			
3		Top Solder	Solder Resist	0.010mm	3.5
4		Top Layer	Copper	0.035mm	
5		Dielectric 1	FR-4	1.500mm	4.2
6		Mid 1	Copper	0.036mm	
7		Dielectric 3		0.127mm	4.2
8		Mid 2	Copper	0.036mm	
9		Dielectric 2		0.254mm	4.2
10		Bottom Layer	Copper	0.035mm	
11		Bottom Solder	Solder Resist	0.010mm	3.5
12		Bottom Overlay			
13		Bottom Paste			
	Height : 2.043mm				

Designator		Comment	Footprint	LibRef	ClassName	PartNumber	Quantity	
C1		10u	1206	C		CGA5L1X7R1E106K160AE	1	
C2		47u/ 35V	AL6.3	C-EL_1		RC1V476M6L006VR	1	
C3, C9		100n	0603	C		VJ0603Y104KXXCW 1BC	2	
C4, C5, C6, C7		33p	0603	C		06-19330212	4	
C8		1u	0603	C		GCM188R71E105KA64D	1	
C10, C11, C14, C15		470n/ 100V	1210	C		06-26515	4	
C12, C13		47u/ 100V	AL10	C-EL_1		UUR2A470MNL1GS	2	
D1, D2, D3, D4		SKL18	SOD123_D	DIODE_SCHOTTKY		SKL18	4	
GND A, GND B, GND CTR, GND VIN, PWM 1A, PWM 1B, TP SW A, TP SW A1, TP SW B, TP SW B1, TP VIN A, TP VIN B	PK		PK	PK			12	
LED1		LED	1206_D	LED		KPTD-3216PBC-A	1	
M1, M2, M3, M4		M3	PK_M3	PK	Mechanical		4	
R1		1k0	0603	R		05-041004	1	
R2, R3, R4, R5		47R0	0603	R		05-044702	4	
U1		SN74LVC2G17DBVR	DBV0006A_N	CMP-0859-00225-4		SN74LVC2G17DBVR	1	
X1, X2		Header_40	IDC40	Header_40		DS1011-40SBSIB7	2	
X3		Plug socket 2 pole	TBG2-3.5MM_H	Header_2		15EDGRC-3.5-02P-14	1	
X4, X5		IDC 2x2 SMD Female	IDC_2x2_SMD_F	CON4		ZL264-4DG	2	
X6, X7, X8, X9, X10, X11, X12, X13		IDC 2x4 SMD Female	IDC_2x4_SMD_F	CON8		ZL264-8DG	8	
X14, X15		Header_3	TBG3-3.5MM_H	Header_3		15EDGRC-3.5-03P-14	2	